

**PAOLO GASPARINI
FIELD OF IMAGES**

KBr Barcelona

30 September 2021 – 16 January 2022

The photographs may not be bled, cropped, guttered, overprinted or altered in any way, whether it be color, proportion or form. It is also not permitted to write, superimpose or add any text on the images.

The reproduction of images in on-line publications and media is allowed only for exhibition publicity and dissemination where the resolution of the reproduction is a maximum 72 dpi/204 pixels in a non-downloadable format.

The reproduction of the images must be accompanied by the pertinent copyright line:

© **Paolo Gasparini**

1



Paolo Gasparini
The Girl from the Salt Mine, between
Pampatar and Punta Ballena, Isla
Margarita, Venezuela, 1958
Gelatin silver print
18 × 14 cm
Fundación MAPFRE Collections

© Paolo Gasparini

2



Paolo Gasparini
26 of July, Havana, 1961
Gelatin silver print
51 × 40 cm
Fundación MAPFRE Collections

© Paolo Gasparini

3



Paolo Gasparini
Member of a Militia, Trinidad, Cuba, 1961
Gelatin silver print
51 × 40 cm
Fundación MAPFRE Collections

© Paolo Gasparini

4



Paolo Gasparini
Carnival, Havana, 1962
Gelatin silver print
37 × 57 cm
Fundación MAPFRE Collections

© Paolo Gasparini

5



Paolo Gasparini
Comrade Lenin, Havana, 1963
Gelatin silver print
40 × 60 cm
Fundación MAPFRE Collections

© Paolo Gasparini

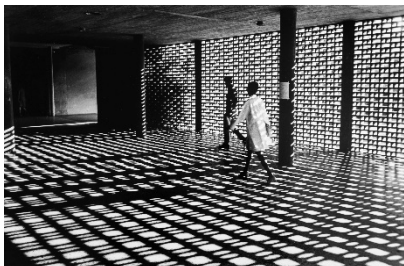
6



Paolo Gasparini
On the Pavement, Santiago de Cuba, 1964
Gelatin silver print
17 × 25 cm
Fundación MAPFRE Collections

© Paolo Gasparini

7



Paolo Gasparini
Transparency, Ciudad Universitaria de Caracas, architecture by Carlos Raúl Villanueva, 1967-1970
Gelatin silver print
40 × 60 cm
Fundación MAPFRE Collections

© Paolo Gasparini

8



Paolo Gasparini
Luxury Election Campaign, Caracas, 1968
Gelatin silver print
16,5 × 25 cm
Fundación MAPFRE Collections

© Paolo Gasparini

9



Paolo Gasparini
Election Campaign, Avenida Urdaneta, Caracas, 1968
Gelatin silver print
40 × 60 cm
Fundación MAPFRE Collections

© Paolo Gasparini

10



Paolo Gasparini
Kinetic piece by Jesús Rafael Soto,
"Progression to the mobile centre", 1969,
Caracas, 1970

Photo-mural of nine digital copies
40 × 60 cm

Fundación MAPFRE Collections

© Paolo Gasparini

11



Paolo Gasparini
The Stone Mine, Bolivia, 1971

Gelatin silver print
22 × 32,5 cm

Fundación MAPFRE Collections

© Paolo Gasparini

12



Paolo Gasparini
"To sell you the better..." Mexico City,
1971

Gelatin silver print
40 × 60 cm

Fundación MAPFRE Collections

© Paolo Gasparini

13



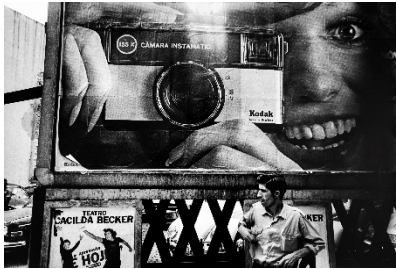
Paolo Gasparini
Game with raised Clogs, Maracaibo,
Venezuela, 1971

Gelatin silver print
40 × 60 cm

Fundación MAPFRE Collections

© Paolo Gasparini

14



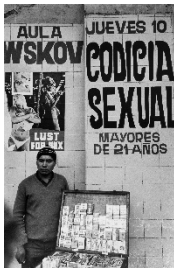
Paolo Gasparini
The better to see you, Latin America, São
Paulo, 1972

Gelatin silver print
40 × 60 cm

Fundación MAPFRE Collections

© Paolo Gasparini

15



Paolo Gasparini
Advertisements for modernity, Lima, 1972

Plata en gelatina / Gelatin silver print
35,5 × 27,5 cm

Fundación MAPFRE Collections

© Paolo Gasparini

16



Paolo Gasparini
Market in Chinchero, Peru, 1976
Gelatin silver print
34 × 51 cm
Fundación MAPFRE Collections

© Paolo Gasparini

17



Paolo Gasparini
Palais Royal, París, 1982
Gelatin silver print
34 × 51 cm
Fundación MAPFRE Collections

© Paolo Gasparini

18



Paolo Gasparini
The Journey, New York, 1986
Gelatin silver print
40 × 60 cm
Fundación MAPFRE Collections

© Paolo Gasparini

19



Paolo Gasparini
Special Effects, Hollywood, Los Angeles, 1997
Gelatin silver print
40 × 60 cm
Fundación MAPFRE Collections

© Paolo Gasparini

20



Paolo Gasparini
Historical Mugshot, Mexico City, 1993
Gelatin silver print
40 × 60 cm
Fundación MAPFRE Collections

© Paolo Gasparini

21



Paolo Gasparini
Polluted waning crescent, early morning of 13 December in front of the Basilica of the Virgin of Guadalupe, Mexico City, 1994
Cibachrome print
40 × 60 cm
Fundación MAPFRE Collections

© Paolo Gasparini

22



Paolo Gasparini
Gaze on the World, Los Angeles, 1997
Gelatin silver print
40 × 60 cm
Fundación MAPFRE Collections

© Paolo Gasparini

23



Paolo Gasparini
Children's Game with Graffiti, São Paulo, 1997
Gelatin silver print
40 × 60 cm
Fundación MAPFRE Collections

© Paolo Gasparini

24



Paolo Gasparini
Returning home, São Paulo, 1997
Gelatin silver print
40 × 60 cm
Fundación MAPFRE Collections

© Paolo Gasparini